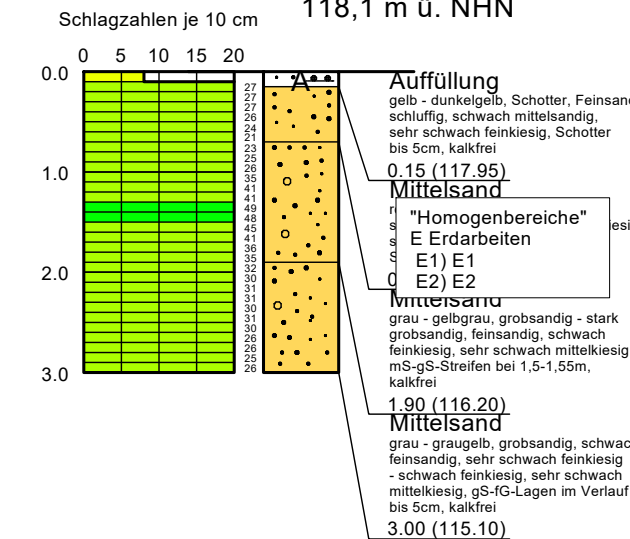
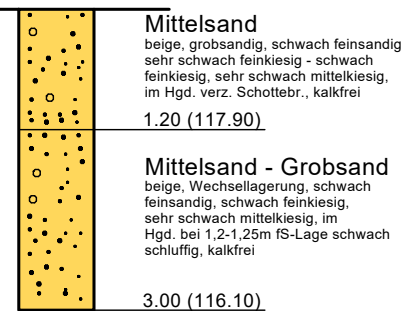


DPL-5 23/040
118,1 m ü. NHN

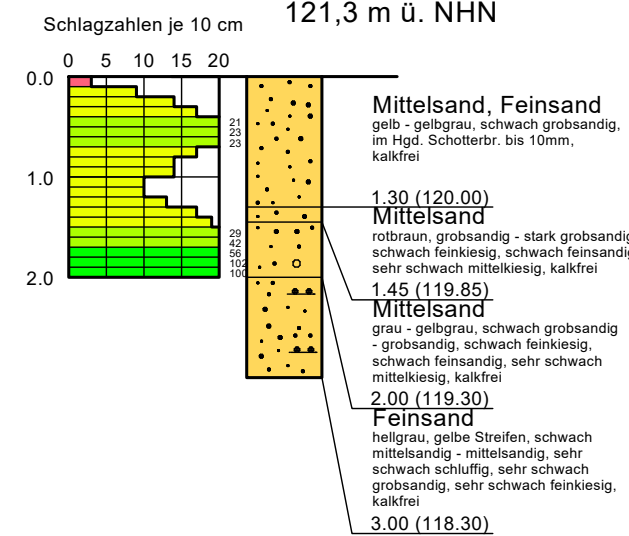


KRB 23/084
118,1 m ü. NHN

KRB 23/085
119,1 m ü. NHN

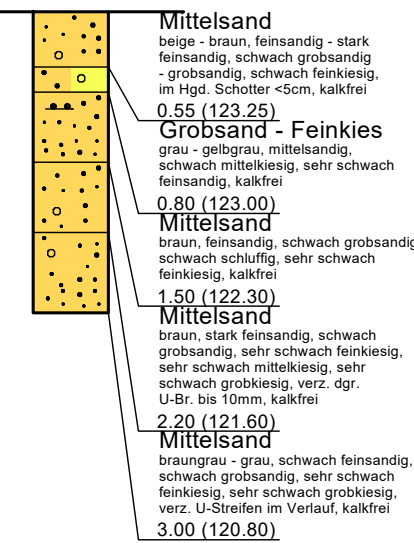


DPL-5 23/041
121,3 m ü. NHN

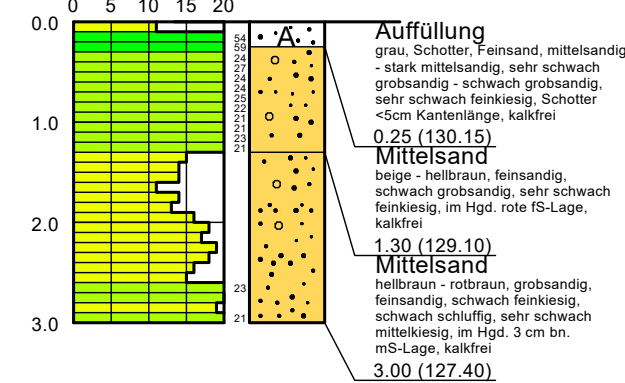


KRB 23/086
121,3 m ü. NHN

KRB 23/087
123,8 m ü. NHN

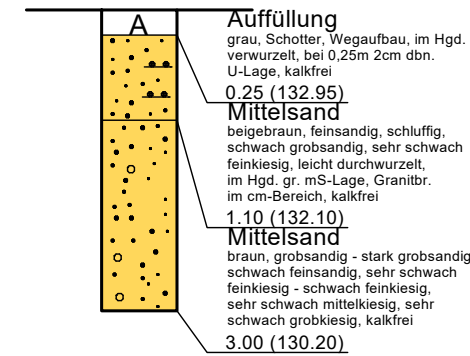


DPL-5 23/042
130,4 m ü. NHN

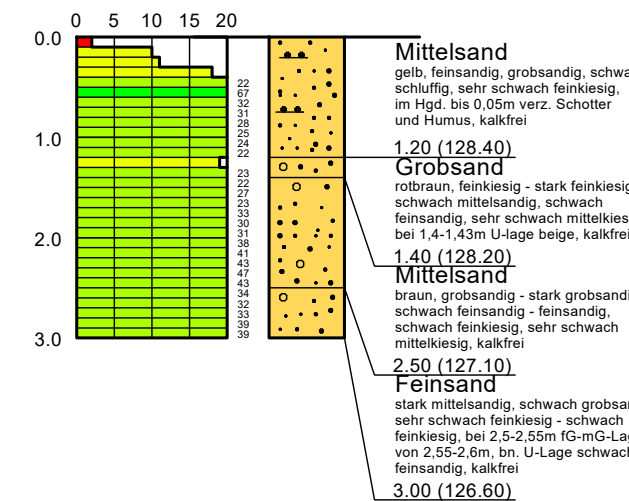


KRB 23/088
130,4 m ü. NHN

KRB 23/089
133,2 m ü. NHN

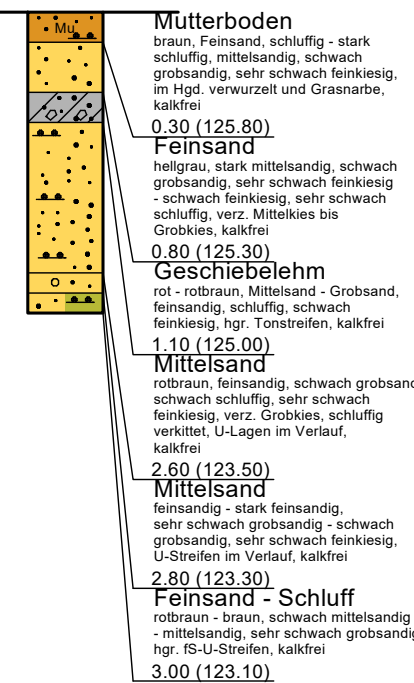


DPL-5 23/043
129,6 m ü. NHN

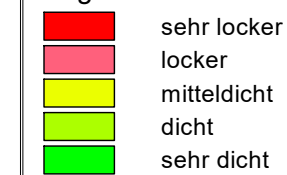


KRB 23/090
129,6 m ü. NHN

KRB 23/091
126,1 m ü. NHN



Legende DPL-5 für enggestufte Sande (SE) U<=3



GMB GmbH
Knappenstraße 1, 01968 Senftenberg
(03573) 78-3440 www.gmbgmbh.de

Standort:	Woschkow	RW:	
Objekt:	Schlösserradweg Großbräschen	HW:	
Geräteführer:	gezeichnet:	bearbeitet:	Auftragsnummer:
Harms	Pötzing	Dröbber	23GIG1-0149
Datum: 25.05.2023	Datum: 30.05.2023	Datum: 30.05.2023	
			DHHS89
			DHHS2016

GMB GmbH

Maßstab:	1:75
Anlage:	6