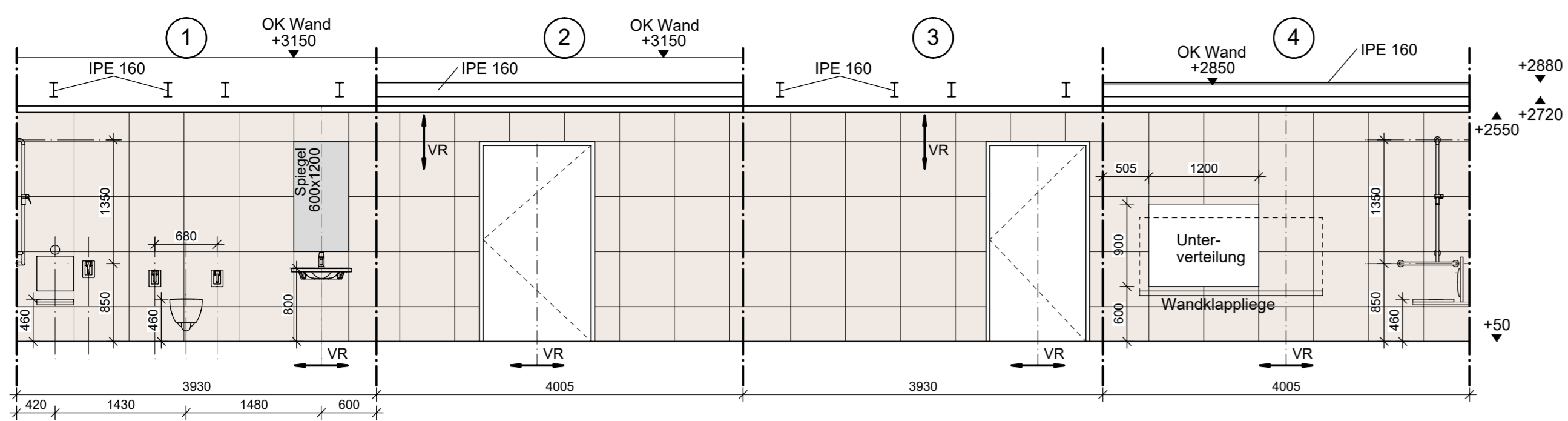
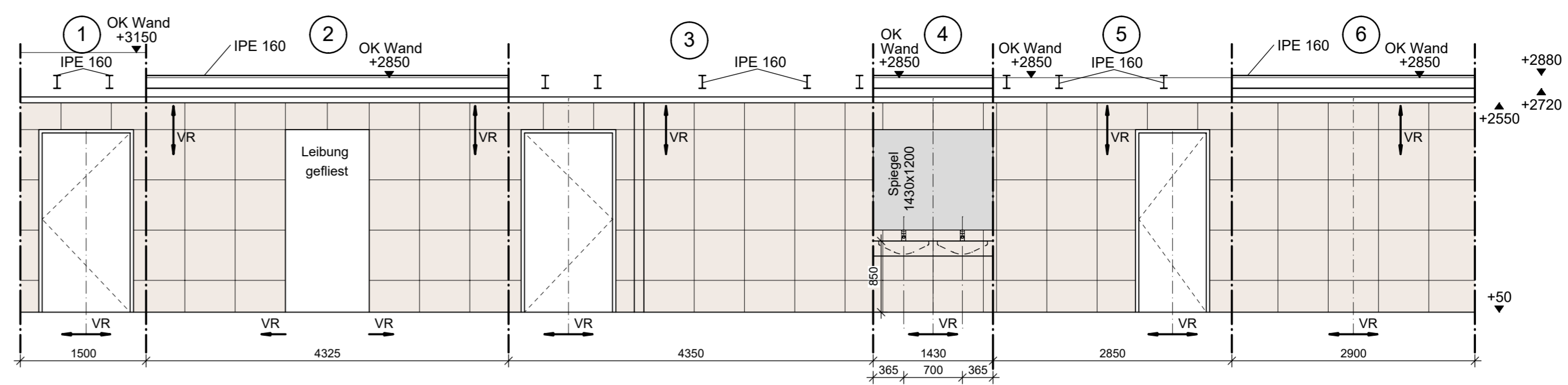


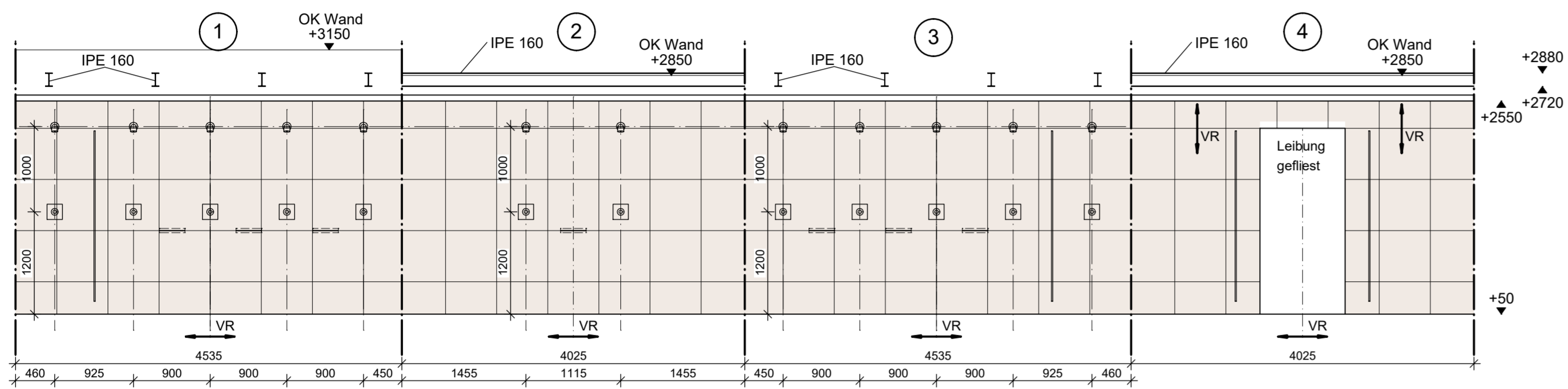
**WANDABWICKLUNG RAUM AH301** M 1 : 50



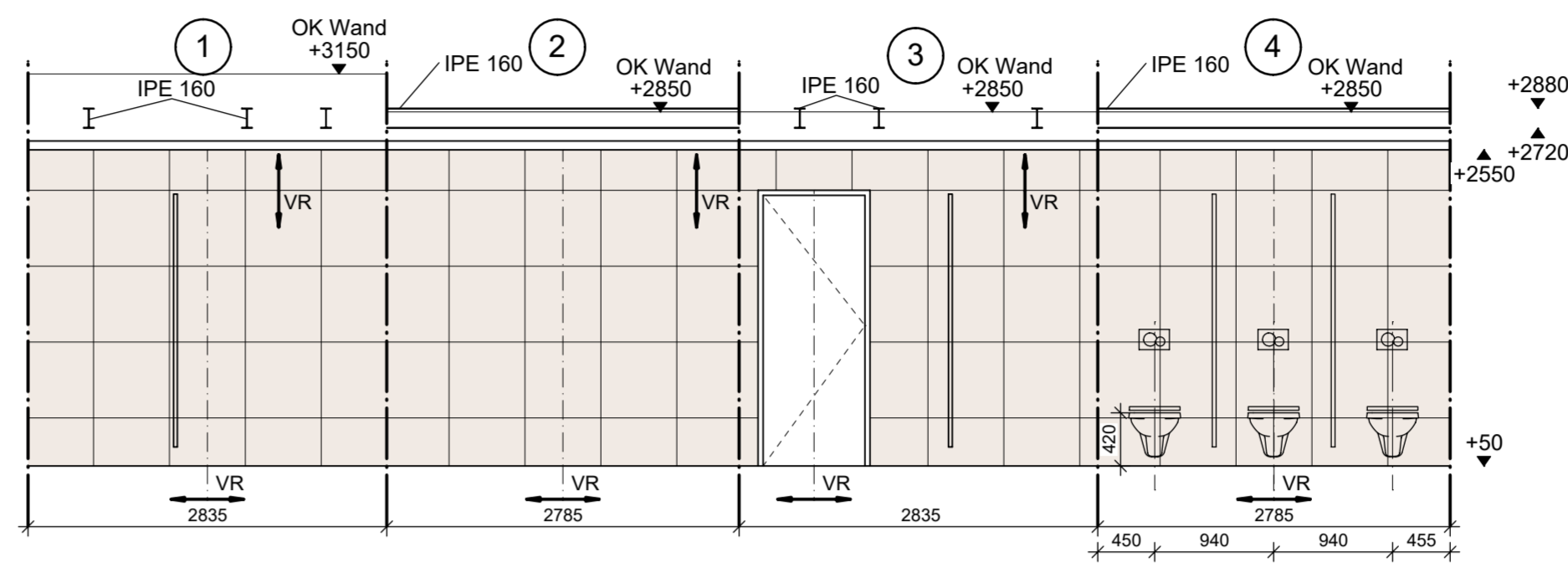
**WANDABWICKLUNG RAUM AH302** M 1 : 50



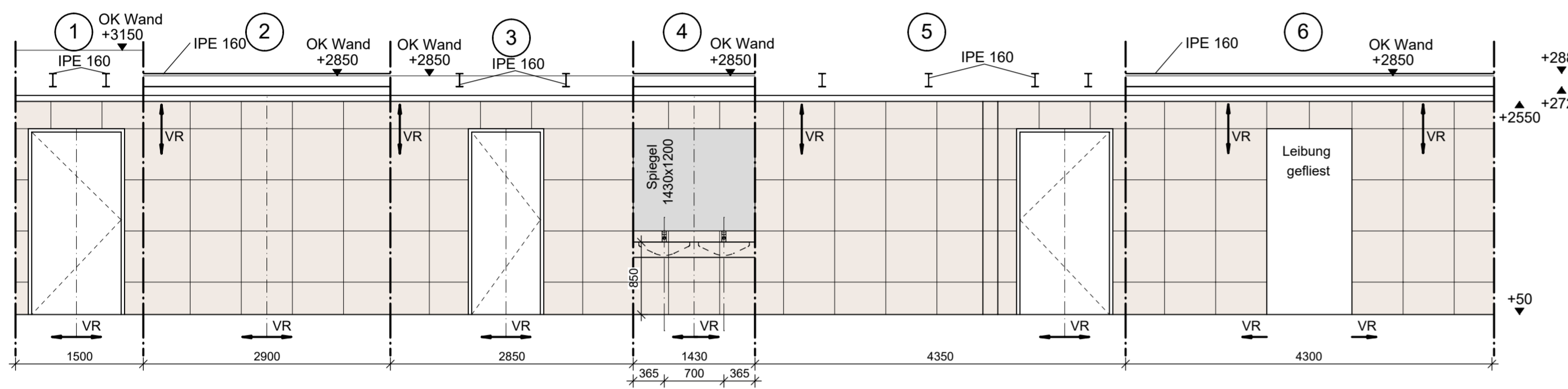
**WANDABWICKLUNG RAUM AH303** M 1 : 50



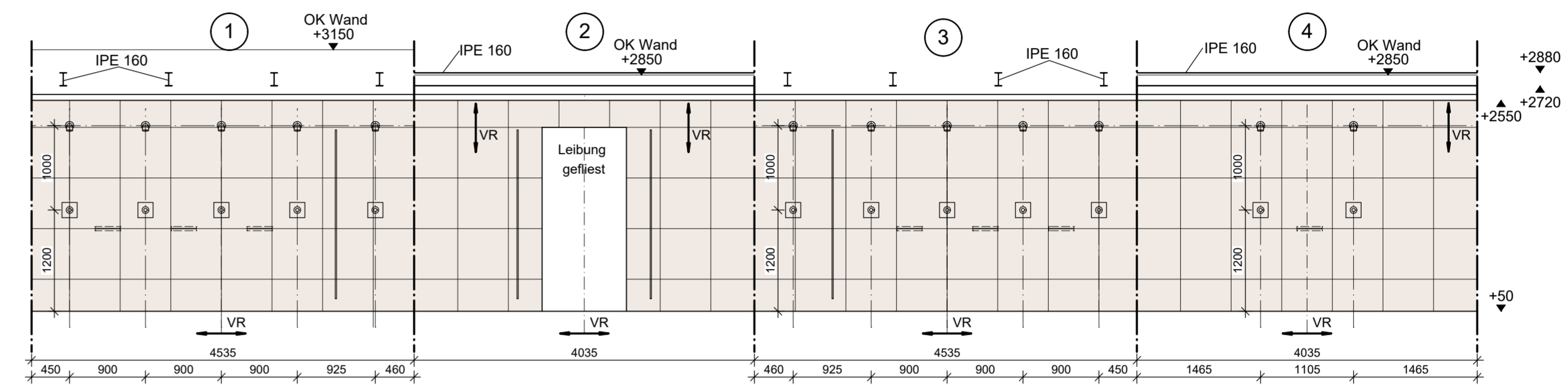
**WANDABWICKLUNG RAUM AH304** M 1 : 50



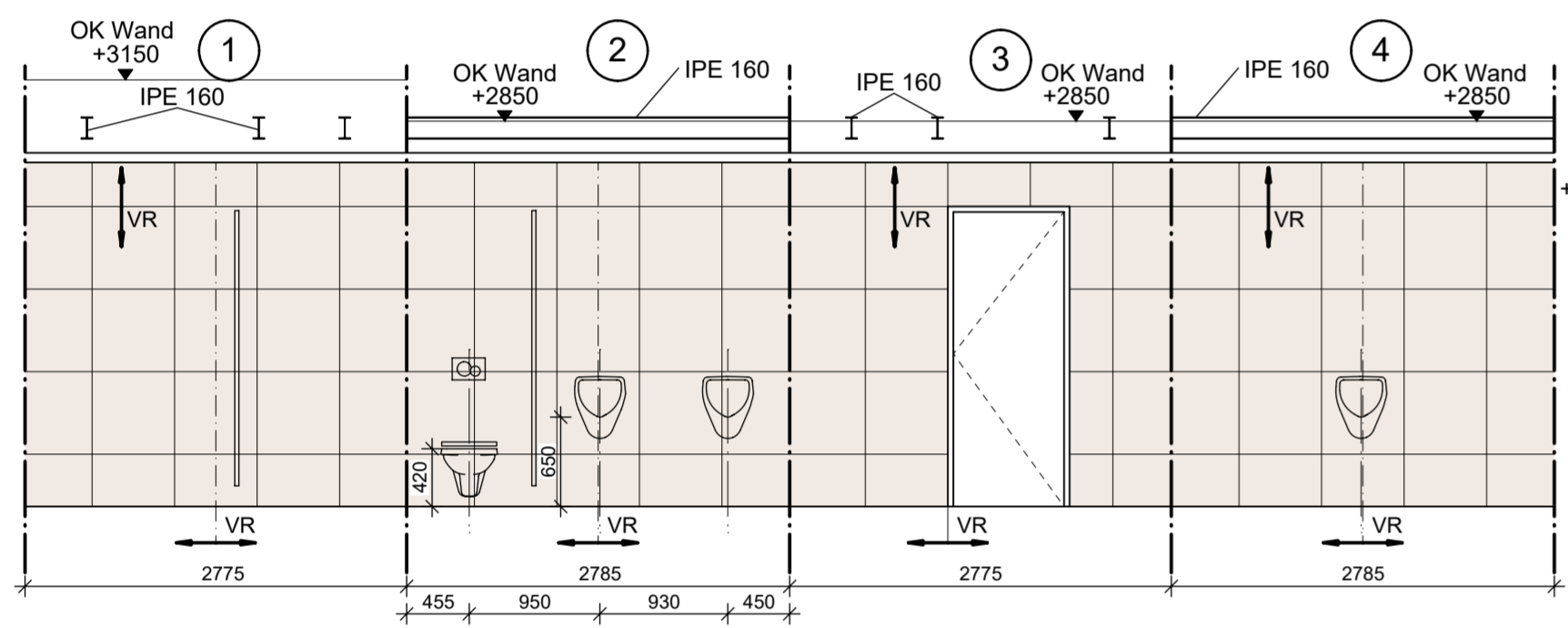
**WANDABWICKLUNG RAUM AH305** M 1 : 50



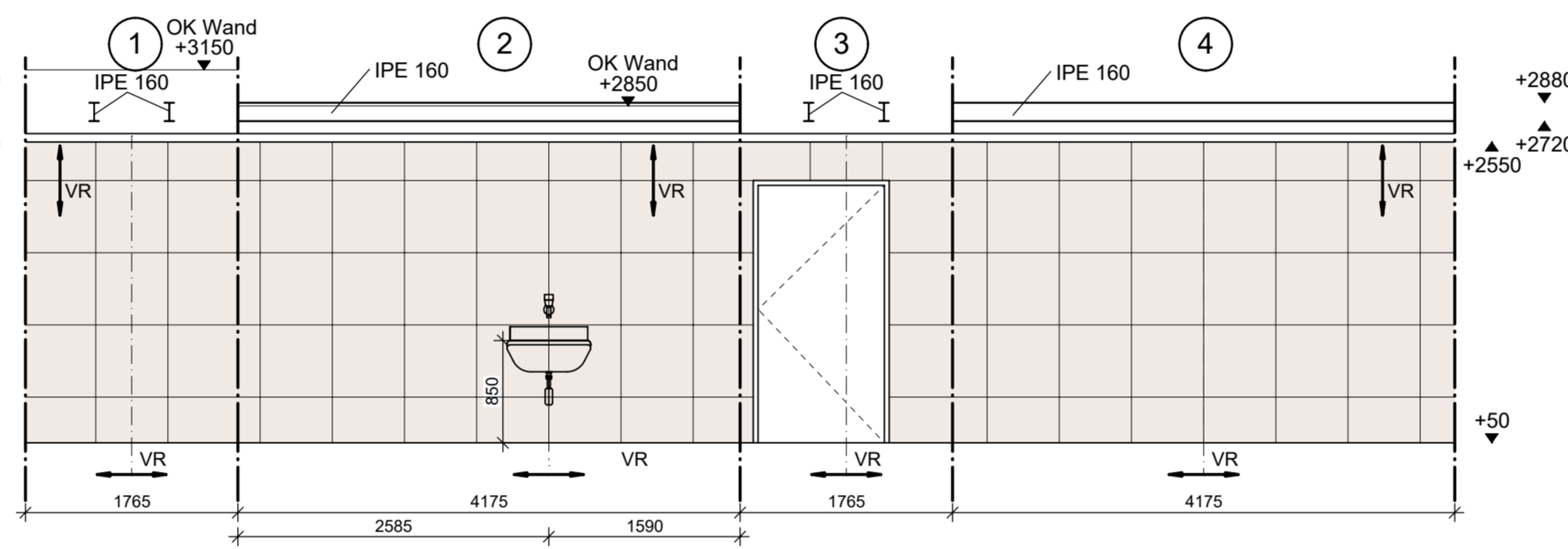
**WANDABWICKLUNG RAUM AH306** M 1 : 50



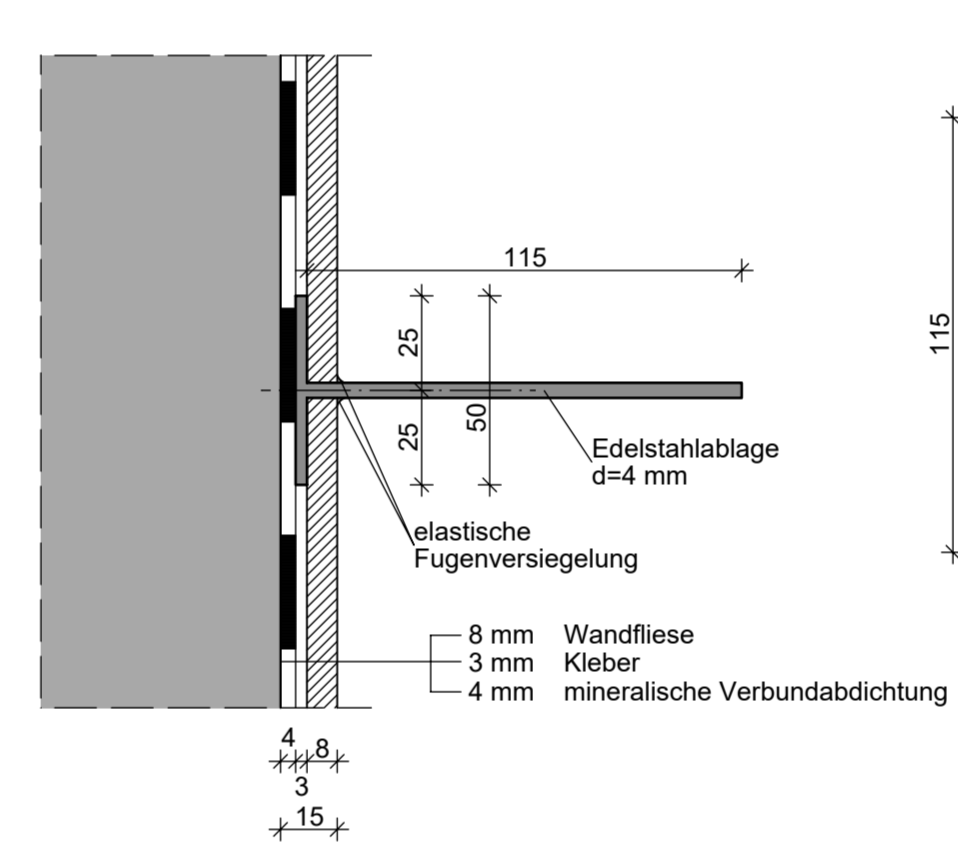
**WANDABWICKLUNG RAUM AH307** M 1 : 50



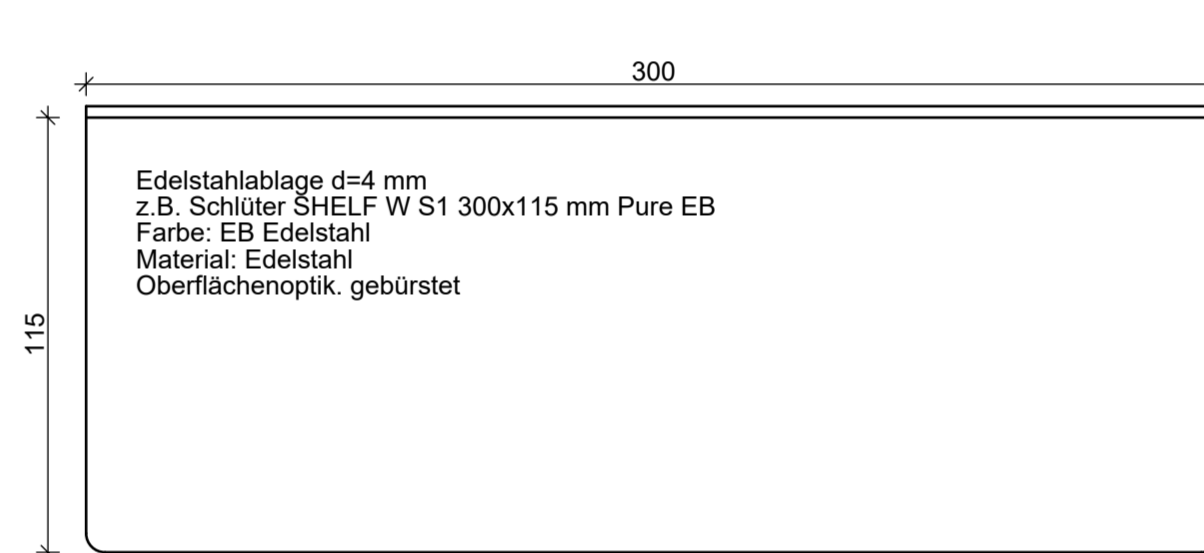
**WANDABWICKLUNG RAUM AH308** M 1 : 50



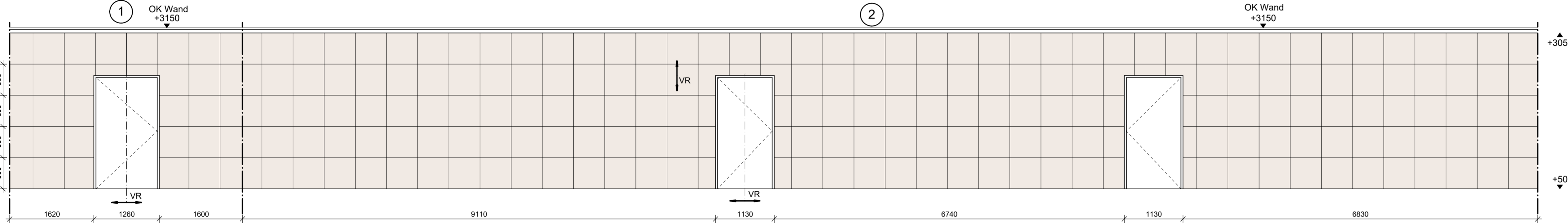
**SCHNITT M 1 : 2**  
**EDELSTAHLABLAGE**



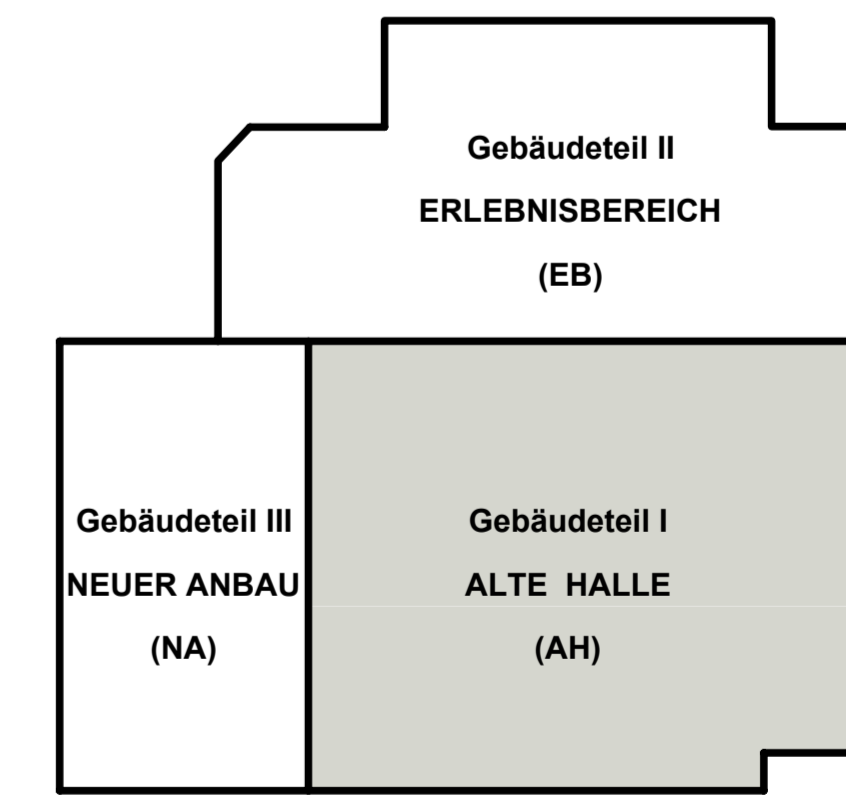
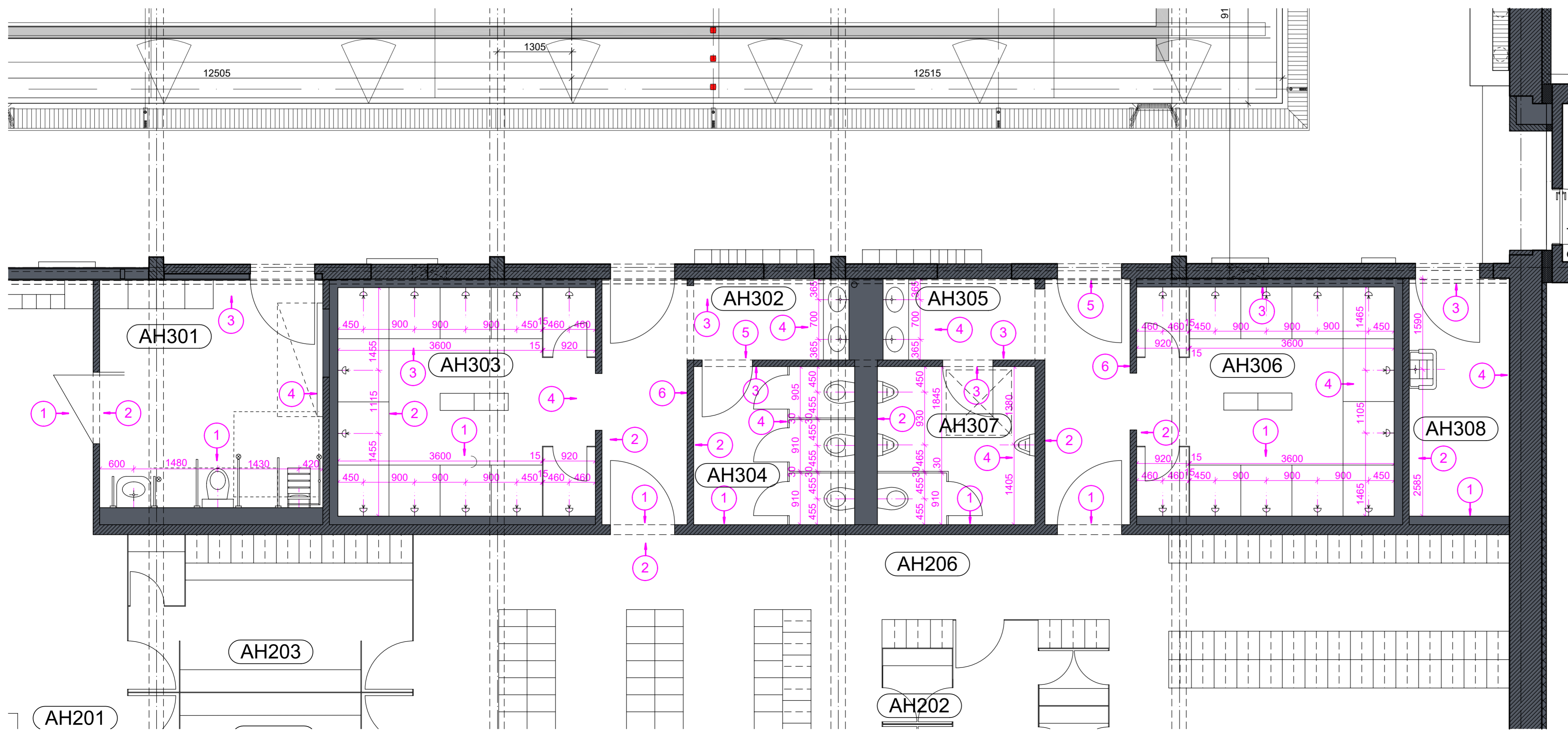
**DRAUFSICHT M 1 : 2**  
**EDELSTAHLABLAGE**



**WANDABWICKLUNG RAUM AH201 und AH206** M 1 : 50



**GRUNDRISS ERDGESCHOSS** M 1 : 50



± 0.00 = +105.65 m über NHN

Index	Datum	Änderung	Name	geprüft
c				
b				
a				

Bauherr:	Stadt Senftenberg	Datum:	20.01.2026
Projekt:	Sanierung Erlebnisbad Senftenberg	Projektnummer:	24 05
Teilobjekt:	Gebäudeteil I - Alte Halle		bearbeitet
Darstellung:	<b>Wandabwicklungen</b> <b>Alte Halle Sanitärbereich</b>	Leistungsphase:	geprüft
Maßstab:	1 : 50, 1 : 2	Blattformat:	850 x 850
		Zeichn.-Nr.:	<b>ARC_3601_AH_FS</b>