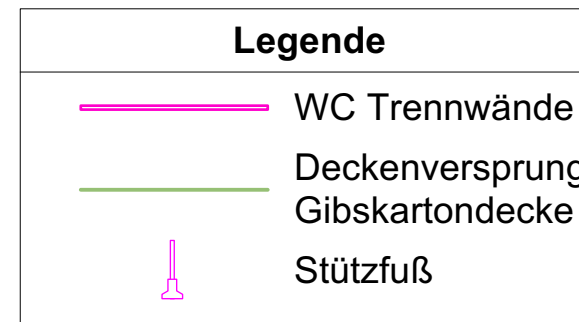


Raumhöhe = 2,20m

WC Trennwände: Höhe = 1,85m, Stärke = 13mm

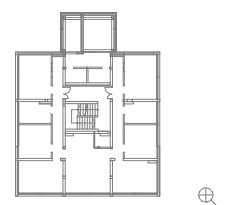
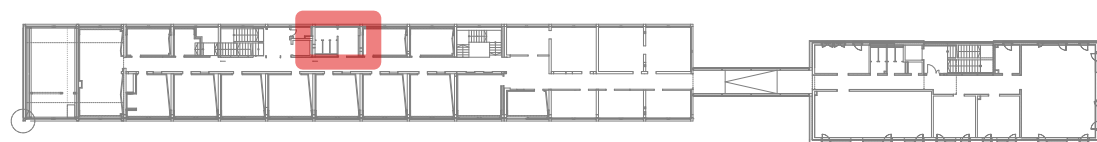
Fußluft: Höhe = 150mm

Drückgarnitur: 105mm über OKF



Raum 0120, 0122
WC

GKD-glatt	BO3.1 Fliesen
△ +5,70 [+2,20]	▽ +3,50
▲ +6,02 [+2,52]	▼ +3,45



Übersicht O1

