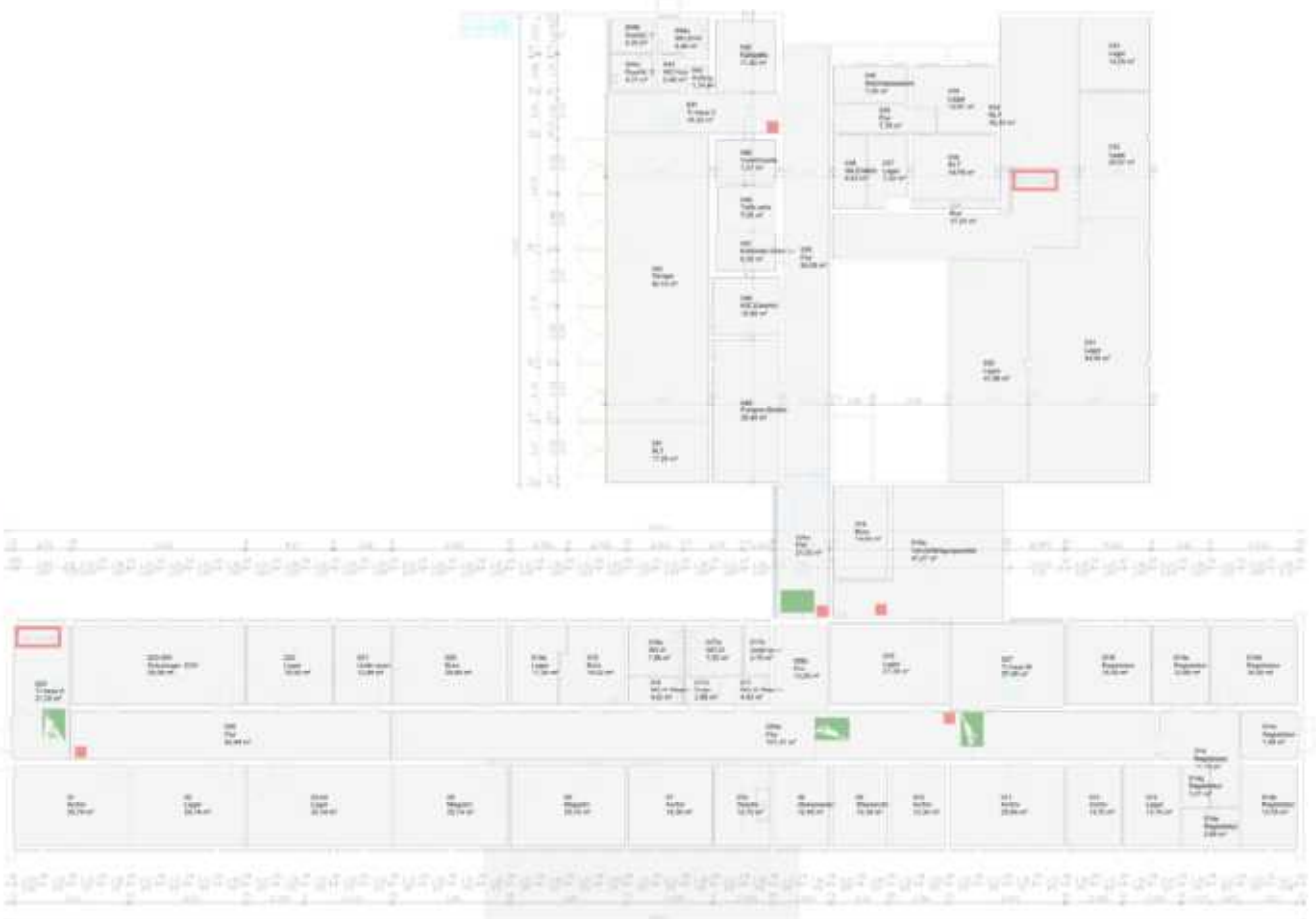


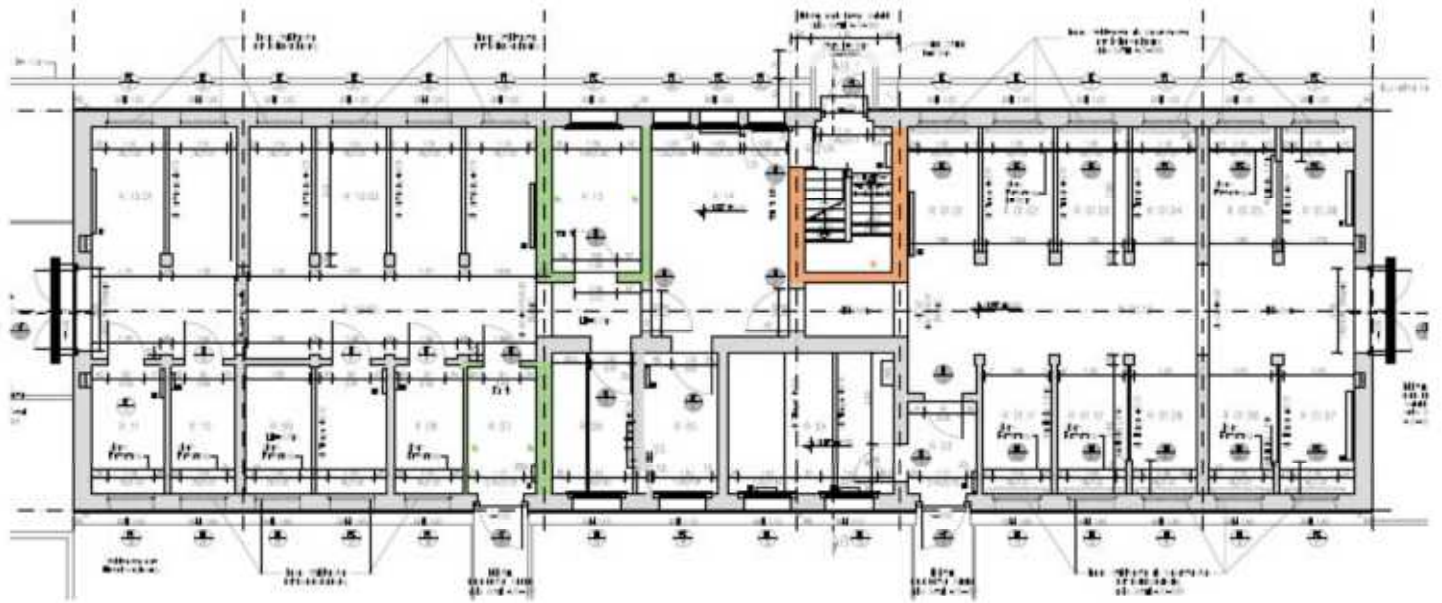
Mustergrundriss Haus 1



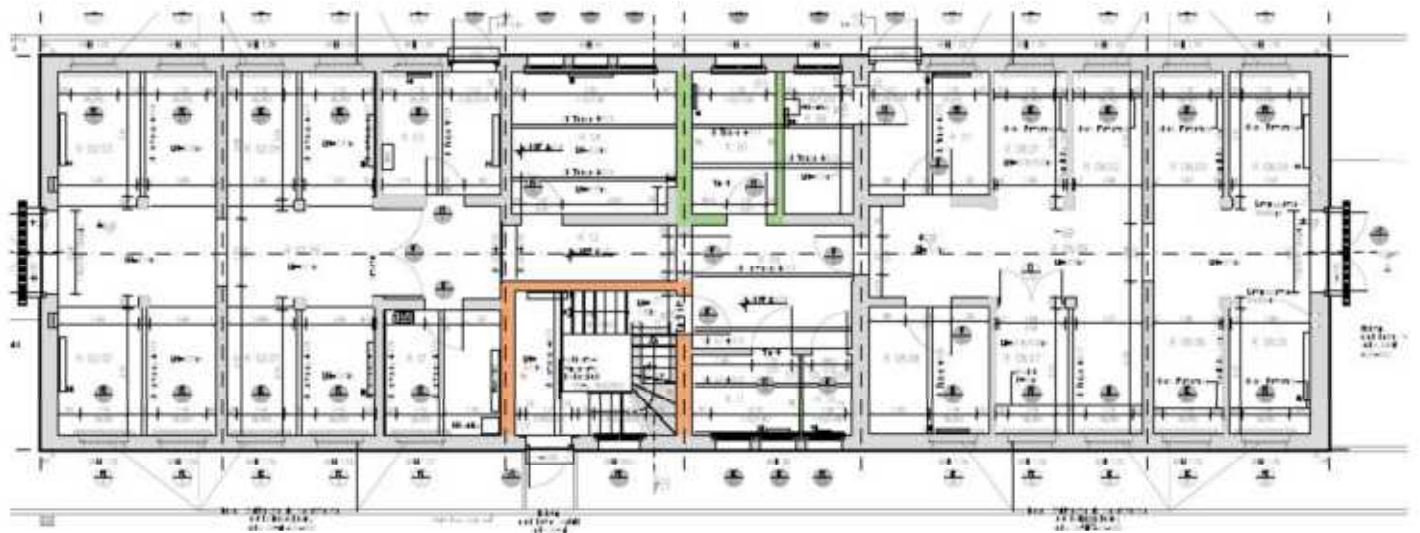
Architectural drawing showing a floor plan with various rooms and corridors. The drawing includes a scale bar at the top right and a north arrow in the middle right. A red box highlights a specific area in the top right, and a green box highlights an area in the middle right. A blue box highlights an area in the top left. A yellow box highlights an area in the bottom right. A grey box highlights an area in the bottom center.



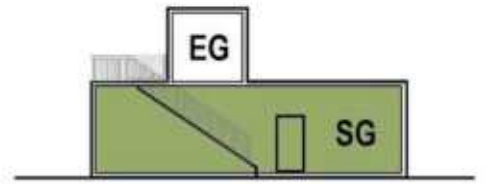
Grundriss Haus 21 - EG

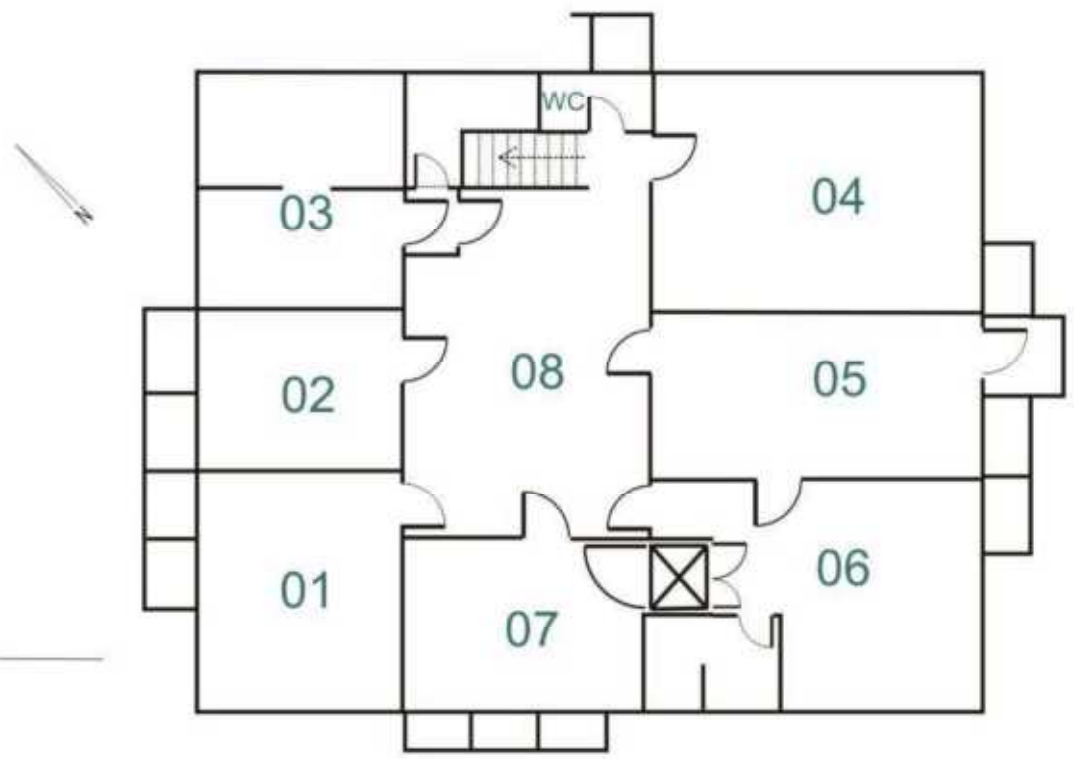
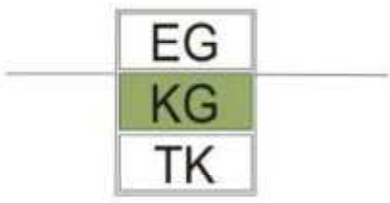


Grundriss Haus 27 - EG



051	052	053	054	055	056
062					
061	060	059	058	057	





EG
KG
TK

