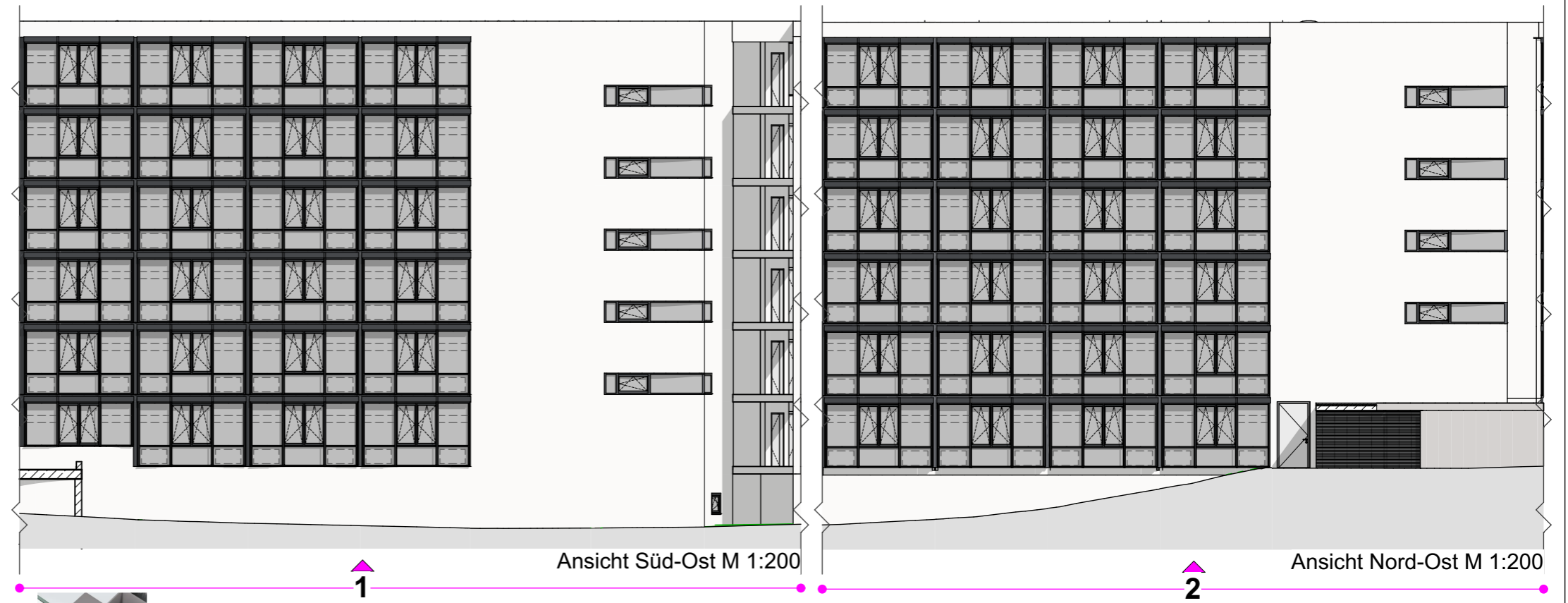
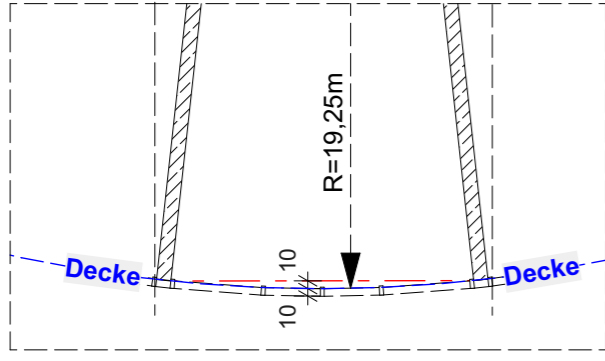
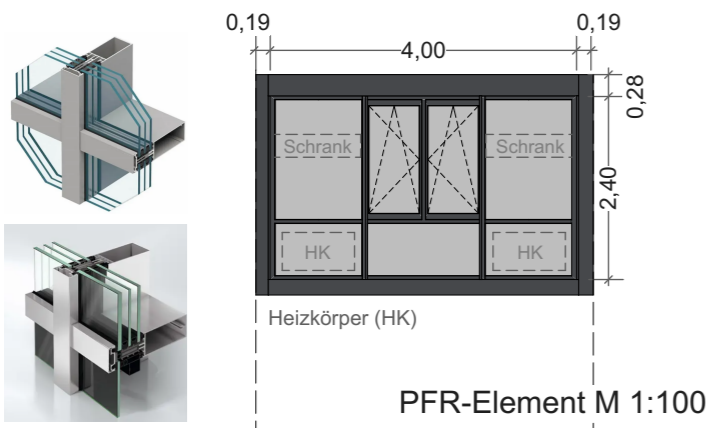
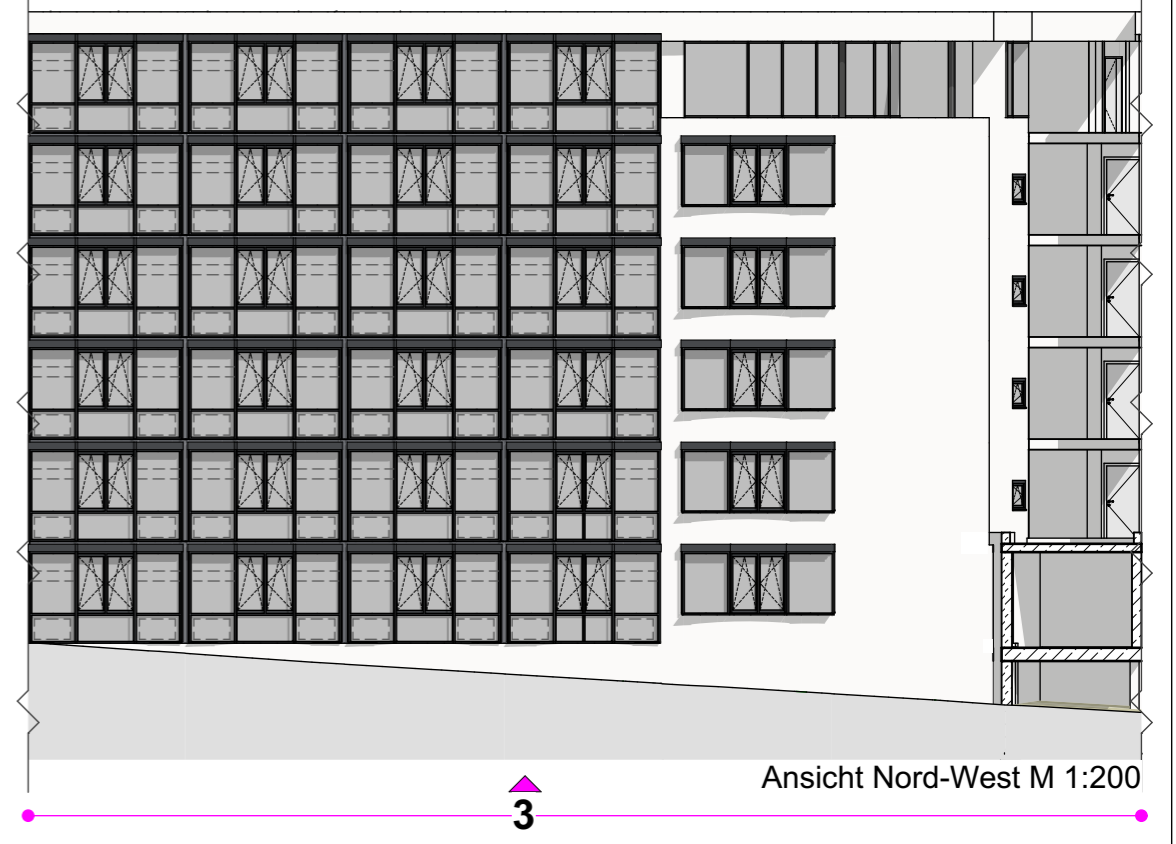
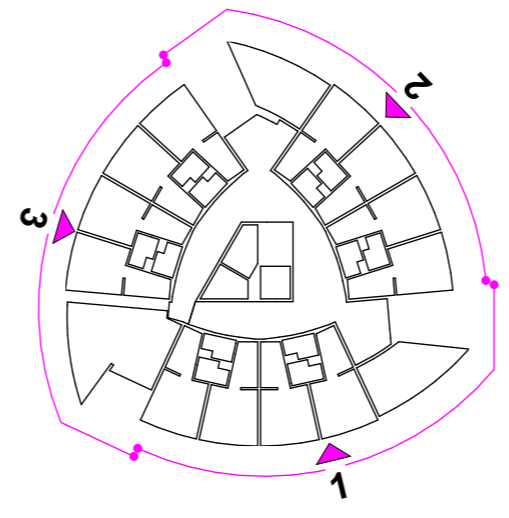
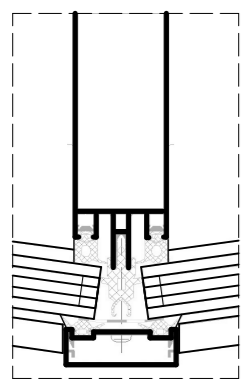
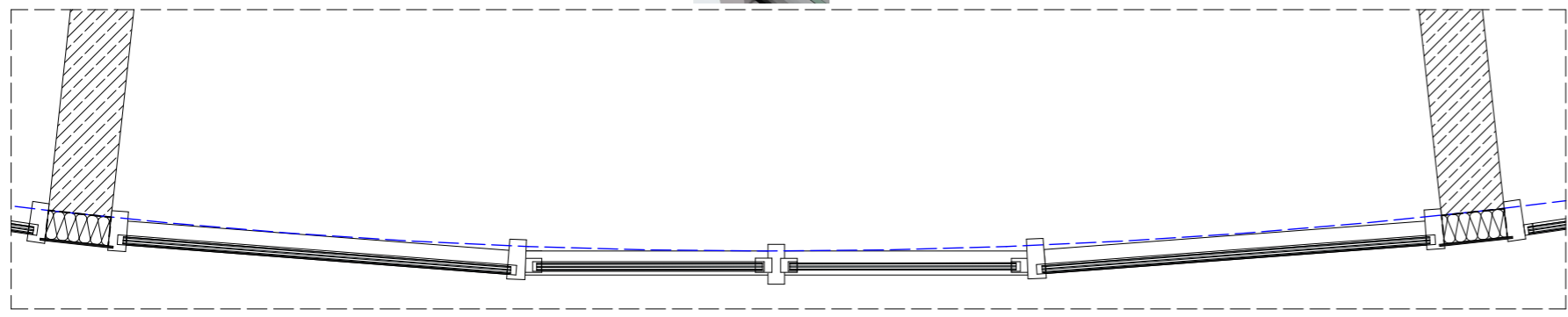


Pfosten-Riegel-Fassade (PRF)



- Pfosten-Riegel-Fassade (PRF) = ca. 842 m²; - Fenstersysteme Alu = ca. 50 m²; - best. Elemente Lichthöfe = ca. 116 m²



	<p>BAUHERR: Kommunalunternehmen des Landkreises Dillingen Große Allee 24 89407 Dillingen a.d. Donau</p>	<p>BAUVORHABEN: Fassadensanierung BVS Schülerwohnheim Lauingen</p>	<p>BAUORT: Kastellstraße 15 89415 Lauingen</p>		<p>INHALT: Ansichten M 1:200 Schnitte M1:100, M1:20 Details</p>	
--	---	--	--	--	---	--